

# **PRO Jack**

## **Instruction Manual**



**[IM]-PKM-PRO-JACK**  
**12/05/2022**

## Table of contents

Chapt I :	Presentation .....	3
1.	Specs .....	3
2.	Features .....	3
Chapt II :	Use notice .....	6
1.	Set up .....	6
2.	Normal use .....	6
3.	Warnings .....	9
Chapt III :	Services .....	9
Chapt IV :	Versioning .....	9
Chapt V :	Notes .....	10

Flash the QR code below or follow the link to find out every information available for this product.



[www.pkm-consulting.com/support/PRO-JACK/](http://www.pkm-consulting.com/support/PRO-JACK/)

The QR code is also on the product with his serial number.



## Chapt I :      **Presentation**

### **1. Specs**

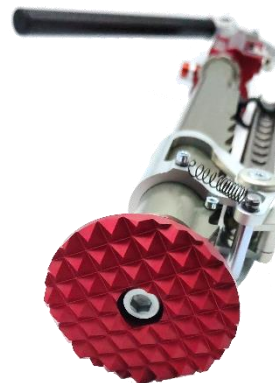
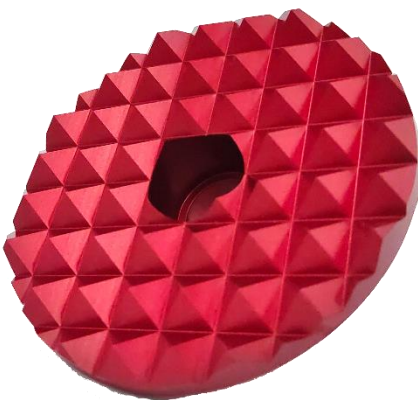
PKM Pro Jack is designed for easily lift rally cars out of assistance park for a reliable and quick wheel change.

Manufactured in lightweight materials, the on-board additional weight is strictly limited.

<b>Stroke (mm)</b>	325
<b>Lifting speed</b>	10 back and forth actions for full stroke
<b>Operating mass(kg)</b>	3.1
<b>Mass without pin (kg)</b>	2.7
<b>Pin diameter (mm)</b>	25
<b>Pin working length (mm)</b>	245
<b>Pin height range (mm)</b>	From 96 to 273 mm (+ stroke)
<b>Pin height unlocking</b>	Automatic
<b>Releasing button</b>	To turn, manageable releasing speed
<b>Automatic releasing time (s)</b>	Less than 2s for full stroke
<b>Overall dimensions (mm)</b>	643 x 119 x 98

### **2. Features**

- a. High grip alloy pad



Allow you to use the jack in the worst conditions.

## b. Fixation system

Few solutions exist to maintain the pin of your jack:

- Plastic Clips



- Magnet



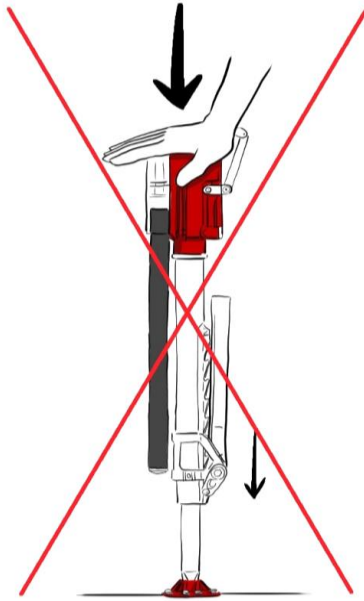
## c. Double action piston

Allow you to pump on the way up and the way down of the carbon stick to lift the car faster.



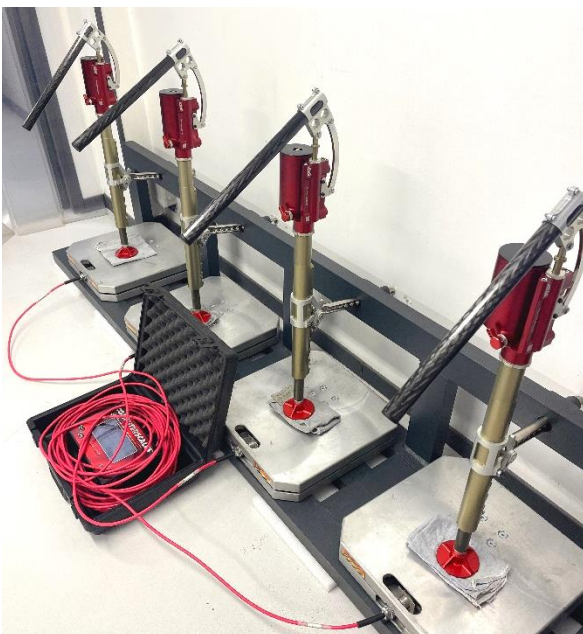
## d. Automatic release

The pressurized jack retracts his rod automatically and doesn't let any free stroke after use. As the picture bellow, you will not lose any time by pushing back the rod to the tube after use.



## e. Tested and approved

All the jack are tested and approved at PKM Consulting factory before shipment. We load the jack under a metal frame with a scale on the floor and test if they keep the load after 15min.



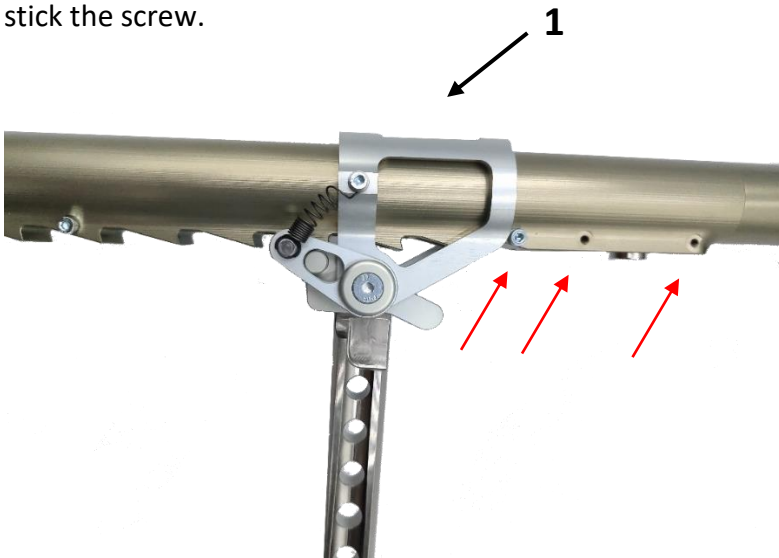
## Chapt II :    Use notice

### 1. Set up

Before lifting your car, you must set up the jack.

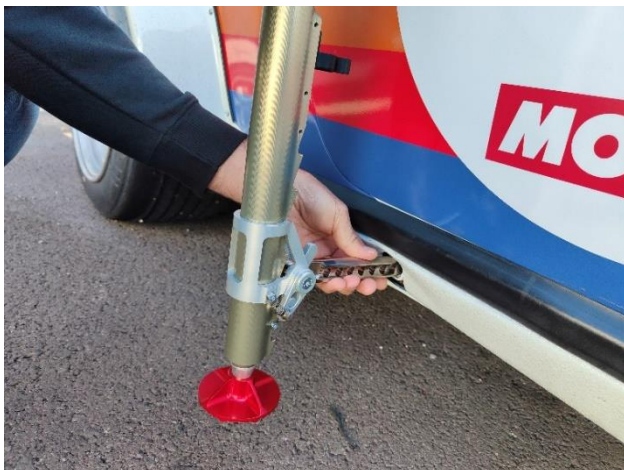
Firstly, if you chose the layout with the pin limiter, you must set up the pin range at the right distance to allow you to lift your car without any damage on it. This step needs to be done only one time before the first use until changing car. Be sure that the pin will be in the car lifting tube at least for 120mm even if you don't use the pin limiter.

You can also setup the high stop of the part named 1 on the picture below by screwing the high stop screw in one of the 3 holes marked with red arrows. Use Loctite 243 with a 4N.m torque to stick the screw.



### 2. Normal use

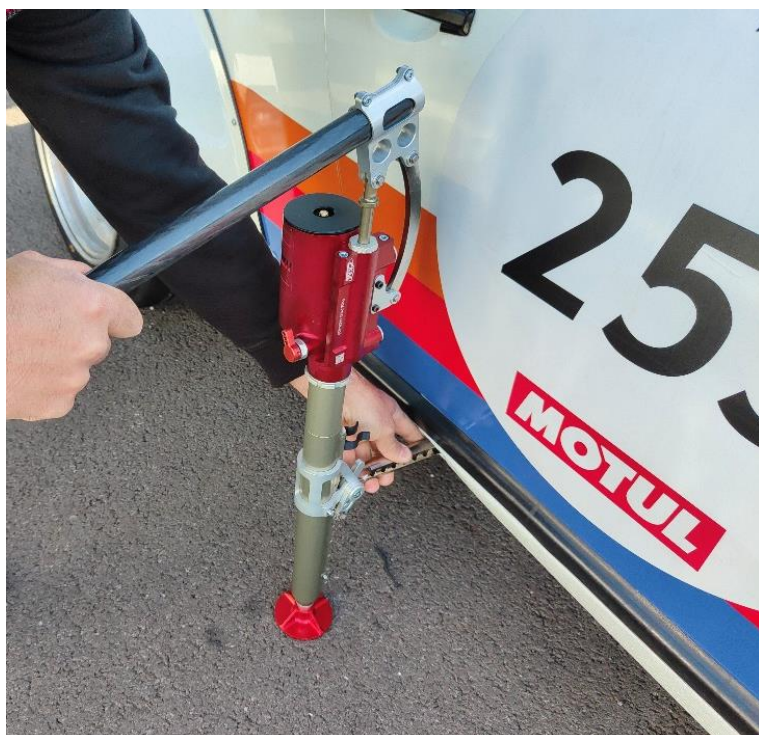
To use the product quickly, unlock the pin and plug it into the car lifting tube. Get the pin inside the tube by at least 120mm.



When it is possible, use the car lifting tube at the opposite axle of the puncture.  
Then, hold the jack by the pin and let it down to the ground to adjust it and avoid pumping for nothing. This step allows you to adjust the higher of the pin by killing the free stroke. You will gain a precious time.



Now you can pump by using the stick and enjoy the full stroke.





For the safety, you must put the extra wheel beside the jack and under the car.  
To remove the jack, turn the releasing button named 2 and let the car go down.



For the first 30°, you can set the down speed. The jack is pressurized, that means the rod will automatically go in the tube. You will not have any free stroke after turning out the releasing button. Be careful, don't trap your hand with the jack pad, it will come fast. If you want to retract the jack correctly, put the pin on the tube before closing the scroll wheel 2.

To pack the jack correctly, remove it from the car lifting tube, fold the pin over the tube jack. It allows the part named 1 to move downward, let it down to the maximum and plug the pin to the clip or the magnet.



Then you can fit the jack in your trunk and go back to racing.



## 3. Warnings

- Do not disassemble the jack, oil and gas on it are pressurized, it can be dangerous and cause damages.
- Do not hit the highest stroke of the stick while you are pumping.
- Maintain the jack correctly in the car.

## Chapt III :    **Services**

To keep your jack working well, you must do recommended services by PKM Consulting every 6 month for a normal use or 3 months for intensive use.

PKM Consulting  
428, Avenue de Copenhague  
83870 Signes, France  
0033494903487 or [contact@pkm-consulting.com](mailto:contact@pkm-consulting.com)

## Chapt IV :    **Versioning**

REV	NAME	DATE	CHANGES
A	RICORD	12/05/2022	Creation



## Chapt V :     Notes

.....

.....

.....

.....

.....

.....

.....

.....

.....

.....

.....

.....

.....

.....

.....