

PRO Jack

Instruction Manual



[IM]-PKM-PRO-JACK
26/02/2024

Table of contents

Chapt I :	Presentation	4
1.	Specs	4
2.	Features	4
Chapt II :	Use notice	7
1.	Set up	7
2.	Normal use	7
3.	Warnings	10
Chapt III :	Pressure check procedure	10
Chapt IV :	Services	12
Chapt V :	Versioning	12
Chapt VI :	Notes	13

Flash the QR code below or follow the link to find out every information available for this product.



www.pkm-consulting.com/support/PRO-JACK/

The QR code is also on the product with his serial number.



Chapt I : **Presentation**

1. Specs

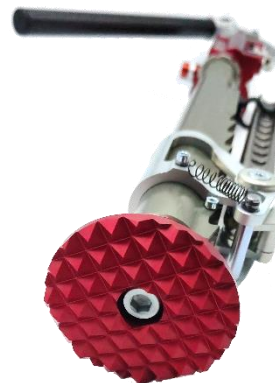
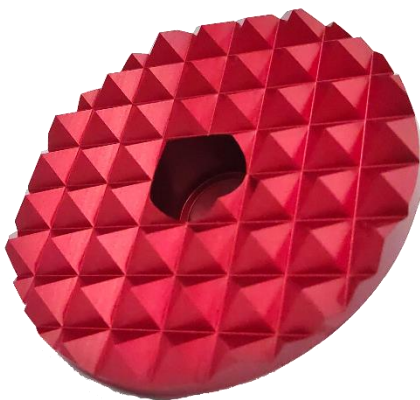
PKM Pro Jack is designed for easily lift rally cars out of assistance park for a reliable and quick wheel change.

Manufactured in lightweight materials, the on-board additional weight is strictly limited.

Stroke (mm)	325
Lifting speed	10 back and forth actions for full stroke
Operating mass(kg)	3.1
Mass without pin (kg)	2.7
Pin diameter (mm)	25
Pin working length (mm)	245
Pin height range (mm)	From 96 to 273 mm (+ stroke)
Pin height unlocking	Automatic
Releasing button	To turn, manageable releasing speed
Automatic releasing time (s)	Less than 2s for full stroke
Overall dimensions (mm)	643 x 119 x 98

2. Features

- a. High grip alloy pad



Allow you to use the jack in the worst conditions.

b. Fixation system

Few solutions exist to maintain the pin of your jack:

- Plastic Clips



- Magnet

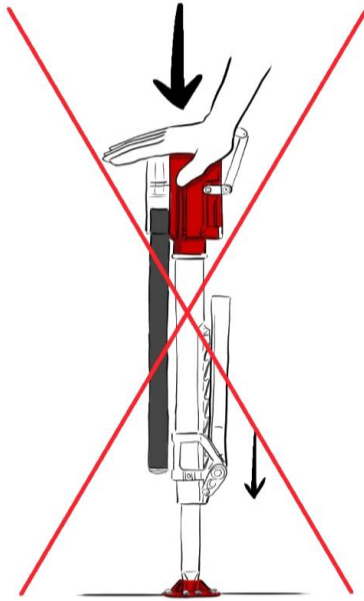


c. Double action piston

Allow you to pump on the way up and the way down of the carbon stick to lift the car faster.

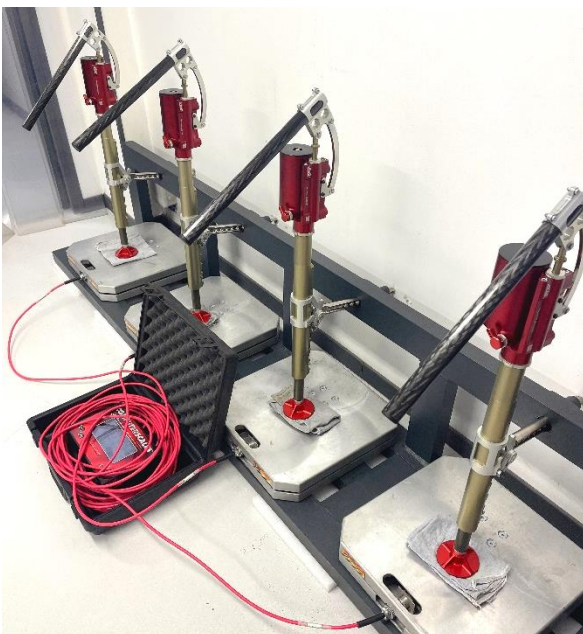
d. Automatic release

The pressurized jack retracts his rod automatically and doesn't let any free stroke after use. As the picture bellow, you will not lose any time by pushing back the rod to the tube after use.



e. Tested and approved

All the jack are tested and approved at PKM Consulting factory before shipment. We load the jack under a metal frame with a scale on the floor and test if they keep the load after 15min.



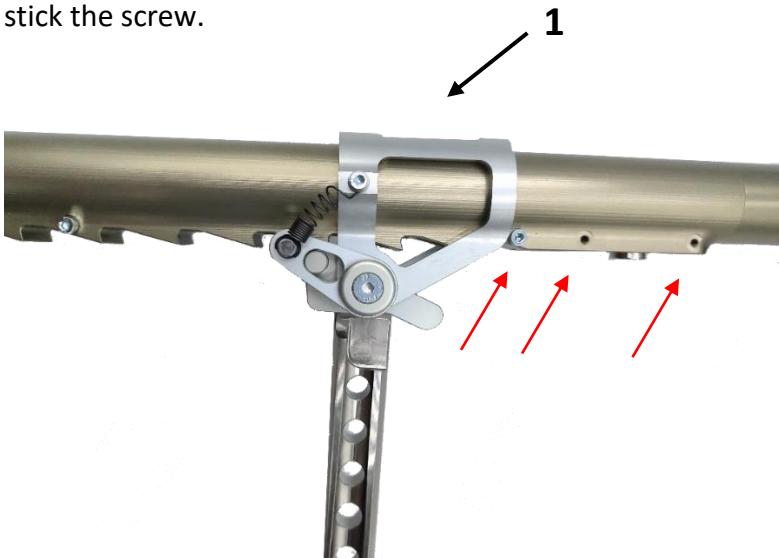
Chapt II : Use notice

1. Set up

Before lifting your car, you must set up the jack.

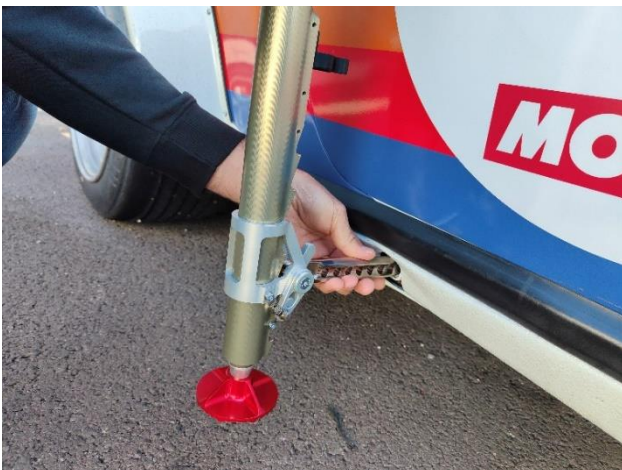
Firstly, if you chose the layout with the pin limiter, you must set up the pin range at the right distance to allow you to lift your car without any damage on it. This step needs to be done only one time before the first use until changing car. Be sure that the pin will be in the car lifting tube at least for 120mm even if you don't use the pin limiter.

You can also setup the high stop of the part named 1 on the picture below by screwing the high stop screw in one of the 3 holes marked with red arrows. Use Loctite 243 with a 4N.m torque to stick the screw.



2. Normal use

To use the product quickly, unlock the pin and plug it into the car lifting tube. Get the pin inside the tube by at least 120mm.



When it is possible, use the car lifting tube at the opposite axle of the puncture.
Then, hold the jack by the pin and let it down to the ground to adjust it and avoid pumping for nothing. This step allows you to adjust the higher of the pin by killing the free stroke. You will gain a precious time.



Now you can pump by using the stick and enjoy the full stroke.



For the safety, you must put the extra wheel beside the jack and under the car.
To remove the jack, turn the releasing button named 2 and let the car go down.



For the first 30°, you can set the down speed. The jack is pressurized, that means the rod will automatically go in the tube. You will not have any free stroke after turning out the releasing button. Be careful, don't trap your hand with the jack pad, it will come fast. If you want to retract the jack correctly, put the pin on the tube before closing the scroll wheel 2.

To pack the jack correctly, remove it from the car lifting tube, fold the pin over the tube jack. It allows the part named 1 to move downward, let it down to the maximum and plug the pin to the clip or the magnet.



Then you can fit the jack in your trunk and go back to racing.

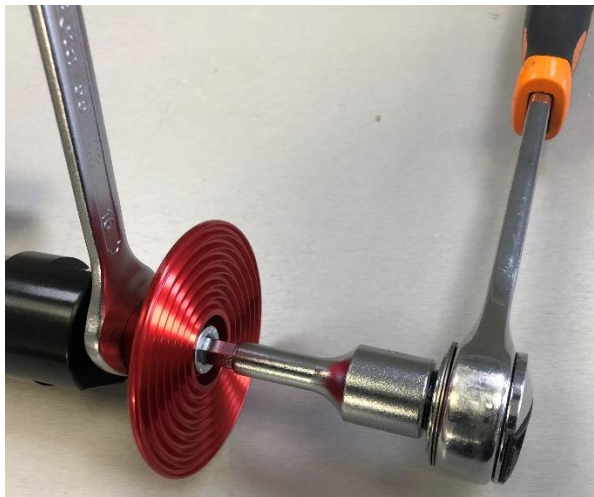
3. Warnings

- Do not disassemble the jack, oil and gas on it are pressurized, it can be dangerous and cause damages.
- Do not hit the highest stroke of the stick while you are pumping.
- Maintain the jack correctly in the car.

Chapt III : **Pressure check procedure**

Note: All the following pictures are from the PKM Sport Jack procedure, but it works the same for the PKM Pro Jack.

- Block the tube end with 16 mm spanner and unscrew the foot screw.



- Put the foot off, unscrew the Torx screw in the tube (don't lose the O-ring).



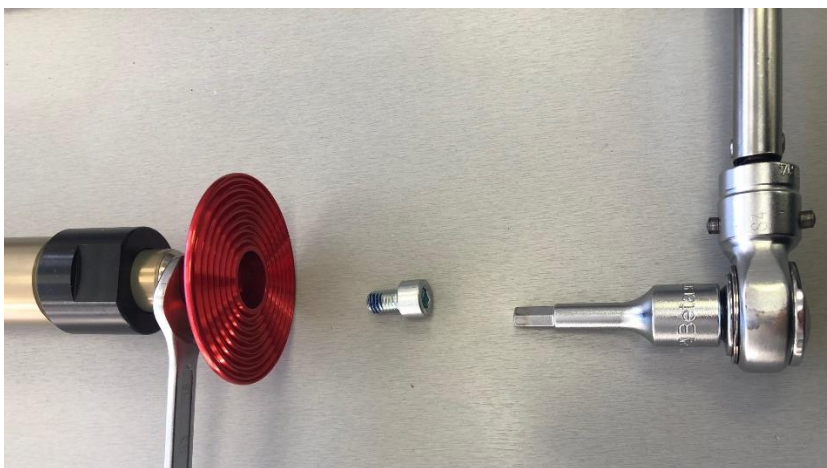
- With OT-AIG-001-A and a high-pressure air pump, prick the membrane.



- Check the pressure on the manometer. If the value is less than 20 bars, re-inflate the jack.
- Put the inflating tool off, fit the Torx screw (don't forget the O-ring).



- Install the foot and screw it (Loctite 243 + Torque 20 N.m)



Recommendation: if you need to re-inflate the jack once, please re-control it once again. If you observe a lack of air a second time, please contact PKM Consulting.

Chapt IV : **Services**

To keep your jack working well, you must do recommended services by PKM Consulting every 6 month for a normal use or 3 months for intensive use.

PKM Consulting
428, Avenue de Copenhague
83870 Signes, France
0033494903487 or contact@pkm-consulting.com

Chapt V : **Versioning**

REV	NAME	DATE	CHANGES
A	RICORD	12/05/2022	Creation
B	KOLLEN	26/02/2024	Update

Chapt VI : Notes

.....
.....
.....
.....
.....
.....
.....
.....
.....
.....
.....
.....
.....
.....
.....
.....